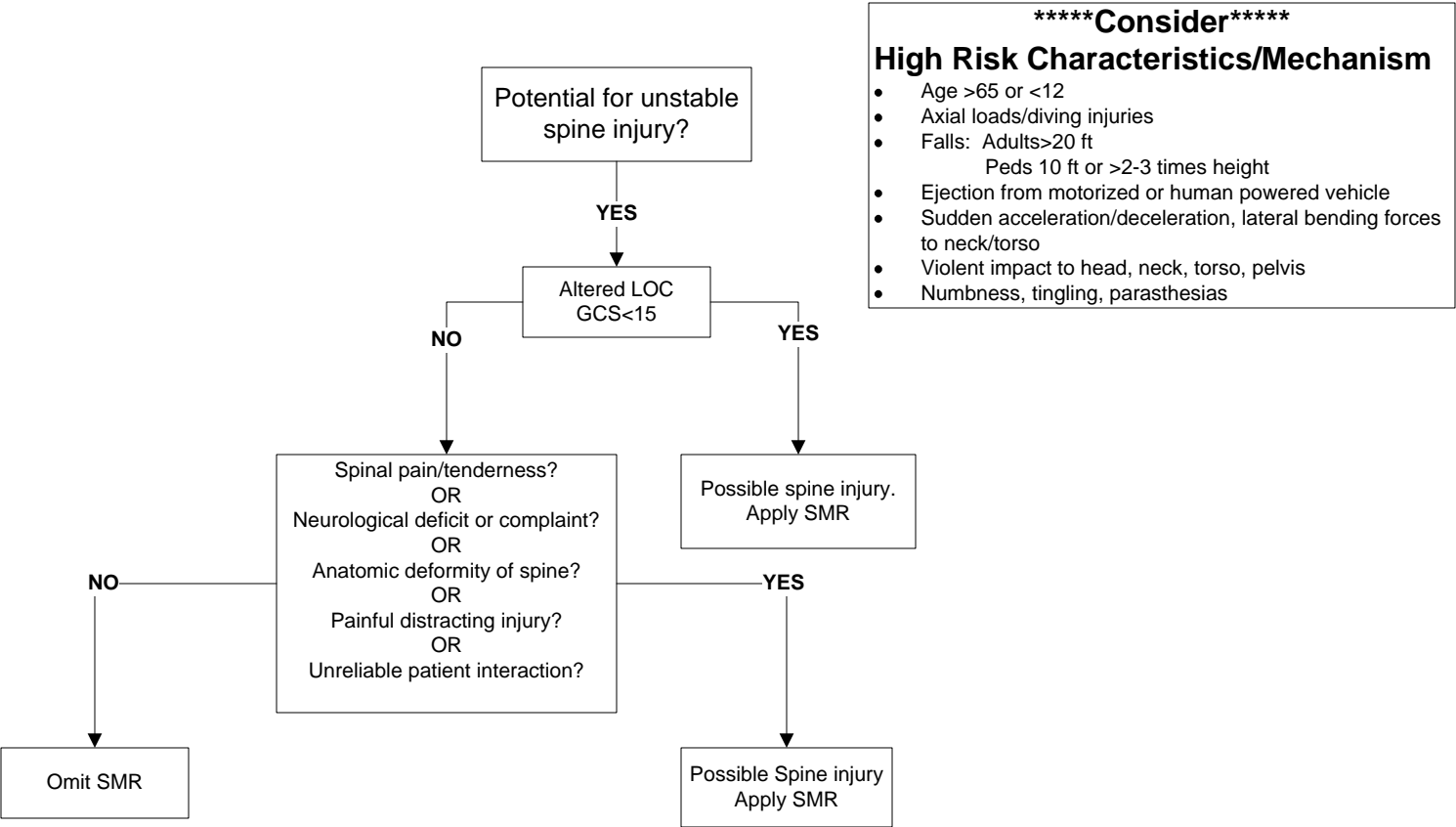


Spinal Motion Restriction- Blunt Trauma⁽¹⁾



- Unreliable Patient Interactions**
- Language barriers; inability to communicate
 - Lack of cooperation during exam
 - Evidence of drug/alcohol intoxication

- Spinal Motion Restriction (SMR)**
- Apply appropriate sized cervical collar
 - Secure patient to scoop stretcher with strap system if available
 - Stabilize head with blocks/pads
 - Pad void spaces if possible
 - Secure to long spine board if scoop stretcher is not available

- Motor/Sensory Exam**
- Wrist/hand extension bilaterally
 - Foot plantar/flexion bilaterally
 - Foot dorsiflexion bilaterally
 - Gross sensation in all extremities
 - Check for parasthesias

1) Document in PCR indications requiring spinal motion restriction.